

LUXEMBOURG IN FIGURES

2017

STATEC

Institut national de la statistique
et des études économiques

SAVOIR
POUR AGIR

Contents

Luxembourg	5
Territory	
Geographical survey	7
Land use	7
Climate	7
Environment	
Air quality	9
Status of water bodies	9
Wastes collected and treated	10
Forest	11
Energy	11
Population	
Population structure	12
The most populated municipalities	12
Households, inhabited buildings	13
Population by age groups	13
Life expectancy	14
Population movement	14
International protection	14
Employment	
Employment and unemployment	16
Domestic employment by branches	17
Living conditions	
Income and poverty	18
Wages	18
Mean consumption expenditure of households	19
Social security	20
Health	20
Road accidents	21
General crime	22
Education	22
Elections	23
Culture	24
Travelling	25
Business demography	
Enterprises by economic activity	26
Enterprises by employee size class	27
Insolvencies	27
Largest private and public employers	28
Agriculture	29
Forestry	30
Wine-growing	30

Handicraft	30
Industry	
Activity indices	31
Producer price indices	31
Steel industry	31
Construction	
Building permissions	32
Finished buildings	32
Activity indices	32
Average apartment prices	32
Tourism	33
Transport	34
Financial services	36
Telecommunication	38
Information society	38
National accounts	
Main aggregates	39
Structure of the gross value added	40
Public finances	
General government expenditure and revenue	41
Public debt	41
External trade	42
Balance of current account	44
Prices	46
Consumption	47
International comparison	
Population and employment	49
Business economy	51
National accounts	52
Prices and finances	53
Publications of STATEC	54
Useful addresses and phone numbers	60



Official designation	Grand Duchy of Luxembourg
Form of government	Representative democracy in the form of a constitutional monarchy
Chief of State	H.R.H. Grand Duke Henri
Head of government	Xavier Bettel, Prime Minister
President of the Chamber of Deputies	Mars Di Bartolomeo
National language	Luxembourgish (Lëtzebuergesch)
Administrative languages	French, German, Luxembourgish
Currency	Euro
Capital	Luxembourg
Administrative divisions	12 cantons, 105 municipalities

LuxStats

Looking for more?



Discover Luxembourg in figures, with many definitions and explanations and even more graphs and maps in the new LuxStats interactive app.

LuxStats is available for free in French.

To download the LuxStats app, simply scan the code that corresponds to your device.



App Store



Google Play



Windows Store

Territory

Geographical survey

Area

Total area of the Grand Duchy	2586 km ²	100%
Area of the two natural regions		
in the north: Éislek (Oesling)	828 km ²	32%
in the south: Guttland (Good Country)	1758 km ²	68%

Dimensions

	North-South	East-West
Maximum	82 km	57 km

Length of the border

Total length	356 km
with France	73 km
with Germany	135 km
with Belgium	148 km

Altitudes

Maximum (Wilwerdange)	560 m
Minimum (Wasserbillig)	130 m
Luxembourg–City	300 m

Land use

	2000	2010	2015	2016 in %
Total area	100.0	100.0	100.0	100.0
Agricultural and wooded area	87.4	85.7	85.3	85.1
Built-up area	8.1	9.3	9.7	9.8
of which: Industrial area and other	2.7	3.0	3.0	3.1
Road-net, railway network, etc.	3.9	4.4	4.4	4.5
Watercourses and waterbody	0.6	0.6	0.6	0.6

Climate

Climate in Luxembourg–City

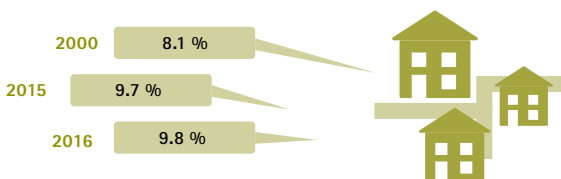
Average 1981–2010	January	April	July	October	12 months
Temperature (in °C)					
Average	1.4	8.9	18.6	9.7	9.6
Maximum	11.3	22.9	32.7	21.7	21.9
Minimum	-10.1	-3.0	6.8	-1.4	-2.0
Relative humidity (in %)	86.9	71.7	71.0	85.0	79.1
Hours of sunshine	45.7	166.9	229.8	100.2	1568.1
Rainfall (in mm)	77.1	53.3	64.3	78.9	823.6

Land use

Agricultural and wooded area



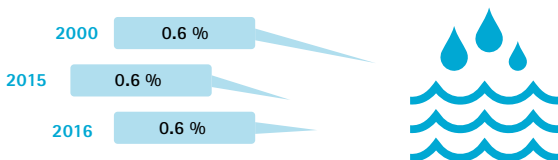
Built-up area



Road-net, railway network, etc.



Watercourses and waterbody



Environment

Air quality

Pollution		EU Norm	2010	2015	2016
		Protection of the human health	Highest recorded value		
Sulphur dioxide (SO ₂)	µg/m ³	350 ¹	69	45	24
Nitrogen dioxide (NO ₂)	µg/m ³	40 ²	59	48	45
Nitrogen oxides (NO _x =NO+NO ₂ in rural areas)	µg/m ³	30 ^{2,3}	21	19	20
Ozone (O ₃)	µg/m ³	180 ^{1,4} /240 ^{1,5}	202	282	188
Carbon monoxide (CO)	µg/m ³	10000 ⁶	1020	1220	1820
Benzene (C ₆ H ₆)	µg/m ³	5 ²	0.6	0.6	0.6
Particulate matter (PM _{2.5} , <2.5 µm)	µg/m ³	25 ²	19	12	13
Particulate matter (PM ₁₀ ¹ , <10 µm)	µg/m ³	40 ²	25	21	21
Particulate matter (PM ₁₀ ¹ , <10 µm)	µg/m ³	50 ⁷	80	84	84
Particulate matter (PM ₁₀ ¹ , <10 µm)	days	35 ⁸	15	6	8
Lead (Pb)	µg/m ³	0.5 ²	0.06	0.01	0.03
Arsenic (As)	ng/m ³	6 ²	2.2	0.4	3.8
Cadmium (Cd)	ng/m ³	5 ²	1.4	0.1	0.4
Nickel (Ni)	ng/m ³	20 ²	4.4	1.4	7.5
Benzo(a)pyrene (BaP)	ng/m ³	1 ²	0.3	0.2	0.3

¹ hourly average

² annual average

³ protection of the vegetation

⁴ information threshold for the population (1 hour)

⁵ alert threshold (3 consecutive hours)

⁶ average over 8 hours

⁷ average over 24 hours

⁸ number of tolerated days over 50 µg/m³

Status of water bodies

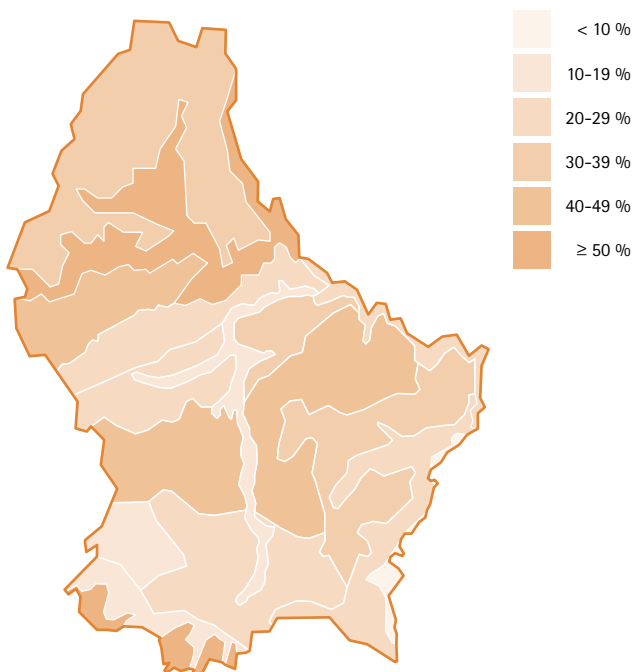
	2009	2015
Ecological status		in %
good	7	3
moderate	52	66
poor	26	23
bad	16	8
Chemical status		
good	70	-
not good	30	100
Hydromorphological status		
good	63	-
moderate	20	2
poor	16	31
bad	2	67

Wastes collected and treated

	2000	2010	2014	2015
			in 1000 tonnes	
Total ¹	285.26	344.26	348.15	355.70
of which: Household wastes	238.85	300.01	306.14	314.89
Other municipal wastes	46.41	44.25	42.01	40.81
			in %	
recycling	21.6	26.9	28.4	29.1
composting	14.2	19.5	19.4	19.8
incineration with energy recovery	43.2	35.7	34.3	40.2
disposal	21.0	17.9	17.9	10.9
			in kg	
Household wastes per capita	547	592	550	553

¹ without inert wastes

Woodland cover



Forest

	2000	2010	2000	2010
	in hectares		in %	
Wooded land	91450	91400	100.0	100.0
Public forest	40950	42000	44.8	46.0
Municipalities	30000	30900	32.8	33.8
State	9800	9950	10.7	10.9
Public institutions	1150	1150	1.3	1.3
Private forest	50500	49400	55.2	54.0
	1993	2000	2015	2016
				in %
State of health of the forest				
Trees with no damage	42.2	43.6	30.5	28.6
Trees slightly damaged	34.0	33.0	36.6	33.1
Trees considerably damaged	23.8	23.4	32.9	38.3

Energy

Final consumption of energy

	2010	2014	2015	2015/14
	in 1000 toe ¹			in %
By product				
Coal products	67	53	49	-7.9
Natural gas (NCV)	675	570	598	4.9
Electricity	567	532	535	0.6
Heat	73	60	56	-7.2
Oil products	2838	2645	2599	-1.7
Other (wood, biofuel)	108	141	149	5.7
By use				
Transport	2628	2510	2431	-3.1
Industries	756	654	652	-0.4
Households	511	469	496	5.8
Services	423	362	401	10.8
Agriculture	8	6	6	-3.9
Total	4327	4001	3986	-0.4

¹ ton of oil equivalent

Population

Population structure

Population censuses	1991	2001	2011	2017 ¹
				x 1000
Total population	384.4	439.5	512.4	590.7
of which: Women	196.1	223.0	257.4	294.0
Luxembourgers	271.4	277.2	291.9	309.2
Foreigners	113.0	162.3	220.5	281.5
of which: Portuguese	39.1	58.7	82.4	96.8
French	13.0	20.0	31.5	44.3
Italians	19.5	19.0	18.1	21.3
Belgians	10.1	14.8	16.9	20.0
Germans	8.8	10.1	12.0	13.1
British	3.2	4.3	5.5	6.1
Dutch	3.5	3.7	3.9	4.3
Other EU countries	6.6	9.2	21.5	34.4
Other	9.2	22.5	28.7	41.2
Foreigners in %	29.4	36.9	43.0	47.7

¹ based on the population register on 1st January

The most populated municipalities

	1991	2001	2011	2017 ¹
				x 1000
Luxembourg-City	75.8	76.7	95.1	114.3
Esch-sur-Alzette	24.0	27.2	30.1	34.4
Differdange	15.7	18.2	21.9	25.4
Dudelange	14.7	17.3	18.8	20.5
Pétange	12.4	13.7	16.1	18.2
Sanem	11.6	13.0	14.5	16.1
Hesperange	9.9	10.4	13.3	15.0
Bettembourg	8.0	9.1	9.8	10.7
Schifflange	6.9	7.8	8.9	10.4
Käerjeng	6.7	8.7	9.7	10.2
Mersch	6.0	7.0	8.0	9.2
Mamer	6.3	6.6	7.5	9.2

¹ based on the population register on 1st January

Households, inhabited buildings

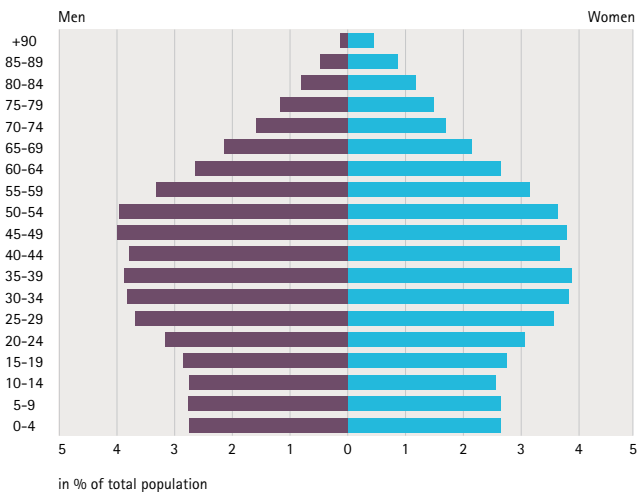
	1970	1991	2001	2011
				x 1000
Private households	108.7	144.7	172.0	208.6
of which: Foreign households	17.7	39.9	59.2	88.9
Inhabited buildings	80.9	105.8	119.6	130.1

Population by age groups

	1991	2001	2011	2017 ¹
				in %
Working age (15 to 64 years)	68.4	67.2	68.7	69.5
of which: Women (15 to 64 years)	33.7	33.2	33.8	34.0
Children (0 to 14 years)	17.3	18.9	17.3	16.2
of which: Girls (0 to 14 years)	8.4	9.2	8.4	7.9
Third age (65 years and more)	14.3	13.9	14.0	14.2
of which: Women (65 years and more)	8.2	8.3	8.0	7.9

¹ based on the population register on 1st January

Total population by age group (January 1st, 2017)



Life expectancy

	1990/92	2000/02	2010/12	2014/16
Males	72.6	74.8	79.5	80.7
Females	79.1	81.0	84.3	85.4

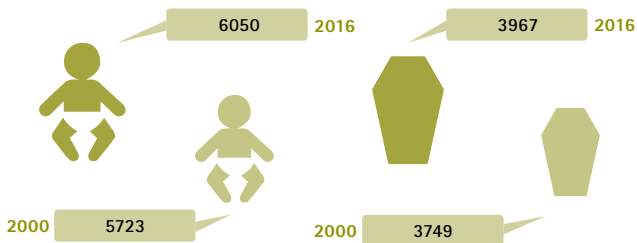
Population movement

	2000	2010	2015	2016
Live births	5723	5874	6115	6050
of which: Girls	2745	2914	2947	2973
Luxembourgers	2917	3029	3166	3123
Foreigners	2806	2845	2949	2927
Births per 1000 inhabitants	13.1	11.6	10.7	10.4
Luxembourgers	10.6	10.5	10.4	10.1
Foreigners	17.3	13.0	11.2	10.6
Total fertility rate	1.78	1.63	1.47	1.40
Deaths	3749	3760	3983	3967
of which: Women	1859	1857	2017	1927
Luxembourgers	3202	3049	3184	3070
Foreigners	547	711	799	897
Deaths by some main causes				
Diseases of the circulatory system	1442	1256	1187	...
Neoplasms	991	1061	1108	...
Suicides	66	74	81	...
Deaths < 1 year	29	20	17	23
Rates per 1000 live births	5.1	3.4	2.8	3.8
Natural increase	1969	2114	2132	2083
Luxembourgers	-290	-20	-18	53
Foreigners	2259	2134	2150	2030
Marriages	2148	1749	2052	1884
of which: Same sex marriages	-	-	139	65
Divorces	1030	1083	1345	1241
Naturalisations	684	4311	5306	7140
Adoptions	114	40

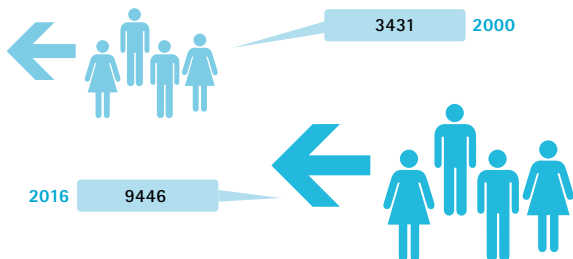
International protection

	2000	2010	2015	2016
Asylum seekers	627	796	2447	2035
of which: Syrians	-	2	630	289
Albanians	79	24	153	226
Kosovars	-	161	231	208
Iraqis	3	95	538	161
Serbs	-	149	63	153
Returns	...	202	731	502
of which: forced	...	103	136	70

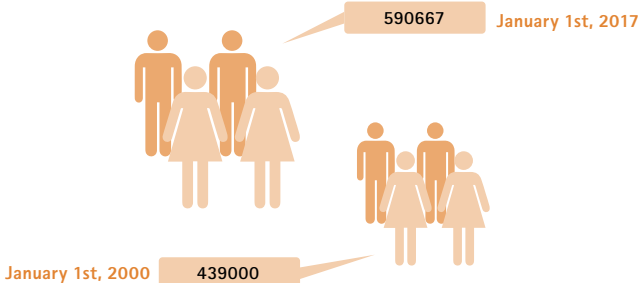
Births and deaths



Migration balance



Total population



Employment

Employment and unemployment

	2000	2010	2015	2016
	x 1000 (annual average)			
1. Domestic employment	264.0	359.6	406.3	418.4
Wage-earners	245.7	337.4	381.2	392.9
Employers, self-employed, unpaid family workers	18.3	22.1	25.1	25.6
2. Net borderers (a) - (b)	79.3	141.2	161.7	168.6
a. Non-resident borderers	88.1	152.4	173.8	180.9
Employers, self-employed, unpaid family workers	1.1	3.1	4.1	4.3
Wage-earners	87.0	149.3	169.7	176.6
of which from:				
France	46.5	74.1	84.3	88.6
Germany	16.4	37.5	42.9	44.2
Belgium	24.2	37.8	42.5	43.8
b. Resident borderers	8.8	11.2	12.1	12.3
of which:				
International agents and civil servants	7.8	10.1	10.6	10.4
3. National employment (1) - (2)	184.7	218.4	244.6	249.8
4. Unemployed	4.5	13.5	17.9	17.0
of which: Unemployed on the dole	...	5.9	6.7	6.3
5. Active population (3) + (4)	189.2	231.9	262.5	266.8
6. Unemployment rate in % (4) : (5)	2.4	5.8	6.8	6.4
7. Persons in job schemes	2.5	3.8	5.4	5.3

Domestic employment by branches

	2000	2010	2015	2016
	x 1000			
Agriculture, forestry and fishing	4.3	4.0	3.7	3.7
Mining and quarrying	0.3	0.3	0.3	0.2
Manufacturing	34.0	32.7	32.2	32.5
Manufacture of food products	4.6	5.1	5.7	...
Manufacture of basic metals and fabricated metal products, except machinery and equipment	10.6	9.3	7.8	...
Manufacture of computer, electronic and optical products	6.0	5.9	6.2	...
Electricity, gas, steam and air conditioning supply	1.2	1.4	1.5	1.6
Water supply	2.1	2.6	2.6	2.7
Construction	28.6	39.0	41.6	42.7
Wholesale and retail trade; Repair of motor vehicles and motorcycles	37.2	44.7	50.7	52.0
Transportation and storage	17.5	24.2	24.8	25.5
Accommodation and food service activities	12.9	16.5	19.3	20.0
Information and communication	8.8	14.1	16.6	17.2
Financial and insurance activities	30.1	40.9	44.7	46.0
Real estate activities	1.4	2.9	3.7	3.9
Professional, scientific and technical activities	15.4	29.7	37.6	39.7
Legal and accounting activities; Activities of head offices; Management consultancy activities	7.6	18.1	23.9	...
Architectural and engineering activities; Technical testing and analysis	3.7	6.1	6.9	...
Administrative and support service activities	14.7	22.4	26.1	27.7
Public administration and defence	15.0	20.1	23.4	23.8
Education	11.7	16.5	18.6	19.0
Human health and social work activities	17.6	32.1	41.4	42.3
Arts, entertainment and recreation	2.1	3.4	4.0	4.1
Other service activities	5.2	7.1	8.0	8.1
Activities of households as employers; Undifferentiated goods- and services-producing activities of households for own use	3.9	4.8	5.5	5.4
Total activities	264.0	359.6	406.3	418.4

Living conditions

Income and poverty

	2003	2010	2014	2015
Disposable income				in EUR/month
Mean disposable income per household	4181	5118	5312	5363
Median disposable income per household	3532	4350	4593	4514
Mean disposable income per adult-equivalent	2472	3033	3213	3309
Median disposable income per adult-equivalent	2148	2694	2860	2939
Indicators of poverty and income inequality				
At-risk-of-poverty rate	11.9	14.5	16.4	15.3
Income quintile share ratio (S80/S20)	4.1	4.1	4.4	4.2
Gini coefficient	0.276	0.279	0.287	0.285

Wages

Average annual gross earnings by economic activity

Full time-workers

	2005	2010	2014	2015
Industry and services				in EUR
Total	43769	51315	56806	57730
Men	45941	53577	59253	60279
Women	38874	46543	51834	52660
Industry				
Total	40488	46314	50319	50342
Men	42064	47828	51829	51782
Women	31810	37540	41701	42291
Construction				
Total	31468	36179	39565	40107
Men	31419	36050	39342	39882
Women	32336	38049	42843	43297
Services				
Total	46397	54348	60299	61287
Men	50543	58808	65337	66498
Women	39559	47261	52567	53407

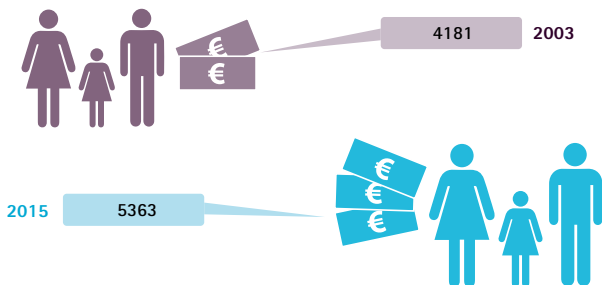
Social minimum wage in January 2017

	Rate	Minimum hourly gross wage in EUR	Minimum monthly gross wage in EUR
Index = 794.54	in %		
Qualified adults	120	13.86	2398.30
Unqualified adults	100	11.55	1998.59
17 to <18 years	80	9.24	1598.87
15 to <17 years	75	8.66	1498.94

Mean consumption expenditure of households

	1998	2010	2014	2015 in %
Total	1000.0	1000.0	1000.0	1000.0
Food and non-alcoholic beverages	100.8	87.7	86.4	87.1
Alcoholic beverages and tobacco	19.9	14.2	13.3	13.2
Clothing and footwear	59.4	61.6	54.7	53.6
Housing, water, electricity, gas and other fuels	273.5	337.7	351.9	349.5
Furnishings, household equipment and routine maintenance of the house	82.2	62.7	62.9	62.9
Health	23.7	24.7	23.7	24.0
Transport	155.0	144.9	143.6	139.8
Communication	21.1	21.5	24.6	25.2
Recreation and culture	87.0	73.0	71.7	69.4
Education	1.7	3.5	6.8	7.8
Hotels, cafes and restaurants	96.1	75.8	78.1	82.8
Miscellaneous goods and services	79.6	92.8	82.4	84.7

Mean disposable income per household



Social security

	2000	2010 ¹	2015	2016
Health and maternity insurance				
Number of insured	352636	474966	538932	536423
Number of covered persons	535424	699539	793044	813124
Regular expenditures (in millions of EUR)	1069.4	2217.1	2835.4	2857.4
Long term care insurance				
Number of covered persons	535424	699539	793044	813124
Regular expenditures (in millions of EUR)	223.1	729.1	667.6	631.6
Pension benefits				
Number of contributors	247253	347887	393510	405583
Number of pensions ¹	107571	138483	164679	170618
Total amount paid in pensions (in millions of EUR)	1476.5	2849.5	3782.5	3932.4
Accident insurance				
Number of insured enterprises	24413	40760	47476	...
Claims made	34127	33990	32608	...
Claims paid and surrender of claims	16083	15317	14174	...
Expenditure on benefits (in millions of EUR)				
Goods and services	25.6	36.7	42.6	37.1
Cash payments	114.6	164.7	162.4	158.1

¹ new methodology from 2010 onwards

Health

	2000	2010	2015	2016
(Situation on January 1st)				
Practising physicians ¹	938	1406	1656	1683
General practitioners	279	414	498	505
Specialists (stomatologists included)	...	992	1158	1178
Practising dentists and dental specialists	260	422	506	550
Veterinarians in activity	104	184	229	239
Practising nurses and health care assistants	...	8268	10198	10367
Pharmacies	89	98	101	101
Hospitals	18	12	12	12
Hospital beds ²	...	2721	2746	2746
Practising physicians per 1000 inhabitants (without dentists)	2.1	2.8	2.9	2.9
Beds per 1000 inhabitants	...	5.4	4.8	4.7

¹ physicians providing services directly to patients

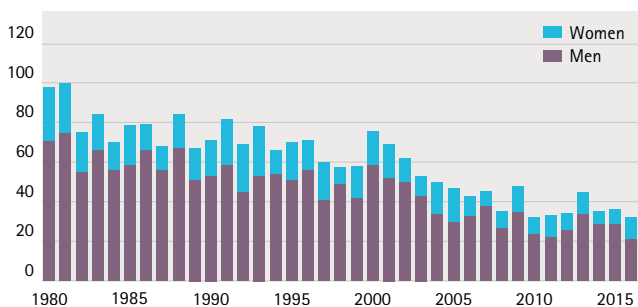
² budgeted by the National Health Fund

	2010	2014	2015	2016
Reported cases of epidemic				
AIDS	7	9	10	9
Tuberculosis	27	28	34	29
Hepatitis C	73	67	61	49

Road accidents

	2000	2010	2015	2016
Accidents resulting in death or injury	901	876	983	941
of which: Fatal accidents	68	29	33	29
Casualties	1333	1217	1384	1235
Killed	76	32	36	32
Injured	1257	1185	1348	1203
of which: Seriously injured	400	266	319	249

Persons killed in road accidents



General crime

	2000	2010	2015	2016
Total	22816	30532	40353	38537
Offences against goods	16407	18531	23561	22306
of which: Burglaries	2951	2413	3608	3205
Thefts linked to vehicles	3886	2018	2182	1903
Other thefts	5552	7218	9293	10043
Offences against people	2351	6134	8355	8257
of which: Acts of violence	1269	2682	3899	3795

Education

	1999/2000	2009/10	2014/15	2015/16
Pupils¹				
Elementary school:				
cycle 1 - Early childhood education	2035	4105	4045	4133
cycle 1 - Pre-primary education	10704	10026	10948	11027
cycles 2 to 4 - Primary education	30475	32312	32152	32556
Technical secondary education	20962	25184	27152	27525
Secondary education	9641	12757	12501	12057
University of Luxembourg	1409	4934	6287	6309
Advanced technicians's certificate training (B.T.S.)	205	204	555	587
Students at foreign universities ²	4401	6992	22102	28051
of which: in Belgium	1166	1793	6673	6695
in France	885	1310	6153	6305
Teachers^{1,3,4}				
Elementary school:				
cycle 1 - Early childhood education	.	381	579	565
cycle 1 - Pre-primary education	631	946	1104	945
cycles 2 to 4 - Primary education	1949	3498	3924	4125
Secondary and technical secondary education	3031	4096	4256	4332

¹ without international and private schools which don't follow the official programs defined by the Ministry of Education

² students on grant

³ including uncertificated teachers

⁴ teachers working both in early childhood education and in pre-primary education are counted within pre-primary education

Elections

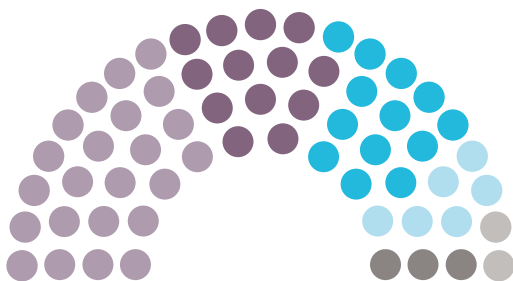
Composition of the Chamber of Deputies

	1999	2004	2009	2013
	Number of seats			
All parties	60	60	60	60
Christian Social People's Party (CSV)	19	24	26	23
Democratic Party (DP)	15	10	9	13
Luxembourg Socialist Worker's Party (LSAP)	13	14	13	13
The Greens (Déi Gréng)	5	7	7	6
Alternative Democratic Reform Party (ADR) ¹	7	5	4	3
The Left (Déi Lénk)	1	.	1	2
				in %
Women	15.0	23.3	20.0	28.0

¹ 1994-2004: Action Committee for Democracy and Pensions Justice

Composition of the Chamber of Deputies (2013)

CSV
 DP
 LSAP
 Déi Gréng
 ADR
 Déi Lénk



European elections

	1999	2004	2009	2014
	Number of seats			
All parties	6	6	6	6
Christian Social People's Party (CSV)	3	3	3	3
Democratic Party (DP)	1	1	1	1
Luxembourg Socialist Worker's Party (LSAP)	1	1	1	1
The Greens (Déi Gréng)	1	1	1	1

Local elections

Municipal councils (proportional representation)

	1993	1999	2005	2011
	Number of seats			
All parties	349	420	475	555
Christian Social People's Party (CSV)	114	126	151	170
Luxembourg Socialist Worker's Party (LSAP)	114	139	165	168
Democratic Party (DP)	78	106	100	106
The Greens (Déi Gréng)	23 ¹	23	41	74
The Left (Déi Lénk)	4 ³	6	1	7
Alternative Democratic Reform Party (ADR) ²	7	11	5	4
Other parties	9	9	12	26

¹ Green list, Ecological Initiative (GLEI) and Green Alternative Party (GAP)

² 1994-2004: Action Committee for Democracy and Pensions Justice

³ Communist Party (KP)

Culture

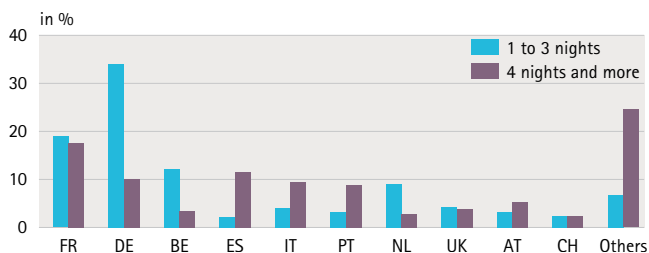
	2014	2015	2016
National library			
Registered users	16312	17171	19232
Borrowed documents	89647	89079	89716
Onsite consultation	20728	23844	18972
Interlibrary loan	8823	7679	7206
Online consultation on eluxemburgensia.lu	838101	904125	953442
Visits of cultural institutions			
National Museum of History and Art (MNHA)	42229	60222	63974
National Museum of Natural History (MNHN)	32203	33929	26602
Museum of Modern Art Grand-Duc Jean (MUDAM)	79435	90964	97081
Philharmonie Luxembourg	164537	191705	190050
Centre de Musiques Amplifiées (Rockhal)	166000	178000	230824
Permanent exhibition "The Family of Man"	18489	15733	16040

Travelling

	2000	2010	2015	2016
Participation in tourism ¹				in %
Leisure travels	74.6	74.7	82.9	80.9
Business travels	17.2	11.9	11.1	15.8
Average expenditure per person ¹	2000	2010	2015	2016
				in EUR
Leisure travels	643	664	749	770
Business travels	611	799	974	1123

¹ share of residents (aged 15 or over) having made at least one holiday trip of at least one overnight stay per year

Destinations by length of stay, 2016 (Travelling for leisure purpose)



Enterprises by economic activity

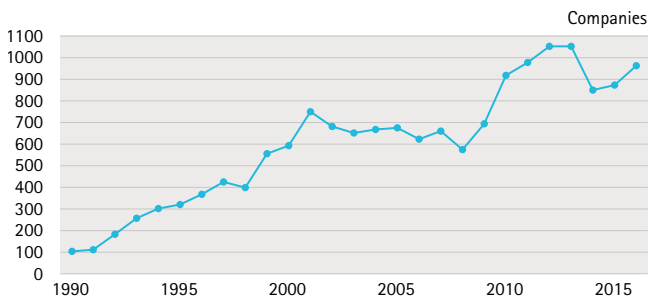
	2011	2012	2013	2014
Active enterprises				
Industry	981	966	977	957
Construction	3246	3332	3425	3523
Services	28505	29192	30369	31420
Wholesale and retail trade	7156	7202	7414	7517
Transportation and storage	1175	1196	1199	1205
Accommodation and food service activities	2773	2746	2754	2777
Information and communication	1758	1874	1976	2079
Financial and insurance activities	1423	1484	1535	1633
Real estate activities	2774	2824	2969	3097
Professional, scientific and technical activities	5615	5781	6119	6448
Administrative and support service activities	1615	1717	1855	2010
Other service activities (education, health,...)	4216	4368	4548	4654
Total	32732	33490	34771	35900
Enterprises births				
Industry	35	46	55	39
Construction	276	289	310	327
Services	2870	2785	3003	3111
Wholesale and retail trade	635	634	677	713
Transportation and storage	98	118	89	81
Accommodation and food service activities	272	228	256	281
Information and communication	204	225	222	252
Financial and insurance activities	136	138	124	143
Real estate activities	282	288	291	334
Professional, scientific and technical activities	637	571	671	681
Administrative and support service activities	192	234	260	283
Other service activities (education, health,...)	414	349	413	343
Total	3181	3120	3368	3477
Enterprises deaths¹				
Industry	60	41	52	48
Construction	228	246	257	266
Services	2076	2081	2239	2303
Wholesale and retail trade	599	553	642	627
Transportation and storage	77	105	86	80
Accommodation and food service activities	265	247	263	264
Information and communication	119	146	161	167
Financial and insurance activities	73	54	57	79
Real estate activities	185	174	203	206
Professional, scientific and technical activities	433	434	433	473
Administrative and support service activities	125	133	138	156
Other service activities (education, health,...)	200	235	256	251
Total	2364	2368	2548	2617

¹ estimation in 2014

Enterprises, by employee size class, 2014

Economic activity	no	1 to 4	5 to 9	≥ 10
	employees	employees	employees	employees
Active enterprises				in %
Industry	22.7	25.6	14.1	37.6
Construction	23.6	32.5	16.6	27.3
Services	41.0	38.2	10.1	10.7
Total	38.8	37.3	10.8	13.0
Enterprises births				
Industry	48.7	38.5	5.1	7.7
Construction	41.9	39.4	16.5	2.1
Services	59.1	34.8	4.3	1.7
Total	57.4	35.3	5.5	1.8
Enterprises deaths (2013)				
Industry	42.3	38.5	13.5	5.8
Construction	43.2	37.0	9.3	10.5
Services	60.6	35.3	3.2	0.9
Total	58.5	35.5	4.0	1.9

Insolvencies



Largest private and public employers

(Situation on January 1st, 2017)

Name	Economic activity	Persons employed
Government		26720
Municipal administration of the City of Luxembourg		3996
Group Post Luxembourg	Wired telecommunications activities	4350
Groupe CFL	Passenger rail transport, interurban	4170
Groupe ArcelorMittal	Manufacture of basic iron, steel and of ferro-alloys	4160
Groupe Cactus	Retail sale in non-specialised stores	4030
BGL BNP Paribas	Monetary intermediation	3700
Groupe Dussmann Luxembourg	Cleaning activities	3650
Goodyear Dunlop Tires Operations SA	Manufacture of rubber products	3410
Groupe PricewaterhouseCoopers	Accounting, bookkeeping and auditing activities; Tax consultancy	2840
Luxair SA	Passenger air transport	2630
Fondation Hôpitaux Robert Schuman	Hospital activities	2210
Centre Hospitalier de Luxembourg	Hospital activities	2200
Centre Hospitalier Emile Mayrisch	Hospital activities	1950
Groupe BIL	Monetary intermediation	1940
Fondation Stéftung Hëllef Doheem	Social work activities without accommodation for the elderly and disabled	1900
Sodexo Luxembourg SA	Event catering and other food service activities	1890
SERVIOR	Residential care activities for the elderly and disabled	1840
Groupe Deloitte Luxembourg	Accounting, bookkeeping and auditing activities; Tax consultancy	1830
BCEE Luxembourg	Monetary intermediation	1810
Elisabeth	Residential care activities for mental retardation, mental health and substance abuse	1710
Compass Group Luxembourg	Food service activities	1680
KPMG Luxembourg SC	Accounting, bookkeeping and auditing activities; Tax consultancy	1550
Cargolux Airlines International SA	Freight air and space transport	1400
Nettoservice	Cleaning activities	1360
Groupe Société Générale Bank & Trust	Monetary intermediation	1290
RBC Investor Services Bank SA	Monetary intermediation	1280
G4S Security Solutions SARL	Private security activities	1210
Groupe Ernst & Young Luxembourg	Accounting, bookkeeping and auditing activities; Tax consultancy	1170
Clearstream	Activities auxiliary to financial services except insurance and pension funding	1110
La Provençale SARL	Wholesale of food, beverages and tobacco	1100
DuPont de Nemours (Luxembourg)	Manufacture of plastic products	1050

Agriculture

General survey

(Situation on 1st April)¹

	2000	2010	2014	2015
Number of farms (total)	2728	2201	2042	2022
Farms of 2 ha and more	2393	1981	1851	1837
Average area (in ha)	53.2	66.1	70.7	71.5
Family farm labour force ²	5554	4321	3920	3906
Farmers	2568	2116	1932	1922
Others	2986	2205	1988	1984
Wage-earners	650	655	952	926
Total of agricultural labour in AWU ²	4292	3726	3533	3534
Utilised agricultural area (in ha)	127643	131106	131077	131384
of which in %: Cereals	22.4	22.7	21.7	22.3
Forage crops	20.4	19.5	21.2	19.8
Other crops on arable land	4.9	5.1	4.9	5.8
Meadows	16.4	6.7	7.2	7.4
Pastures	34.8	44.7	43.7	43.5
Vineyards	1.0	1.0	1.0	1.0
Other crops	0.1	0.3	0.3	0.2
Bovine livestock	205072	198830	198780	201036
Pig livestock	80141	83774	87092	95337
Sheep livestock	7971	9084	8721	9453
Equine livestock	3154	4601	4724	4717

¹ situation on 15 May in 2000 and 2010

² Annual Working Unit

Crop production

	2000	2010	2015	2016
				in tonnes
Wheat, spealt, rye	64787	88592	96668	74242
Other crops	88043	77593	79848	65020
Colza	8370	15895	13834	10915
Dried pulses	1235	973	1565	1304
Potatoes	27858	19531	12971	18714
Maize (dry matter)	130236	181104	168552	179959
Other forage crops (dry matter)	168705	99073	91388	125936
Grassland and pasturage (dry matter)	639715	479438	411860	545331

Animal products

	2000	2010	2015	2016
				in 1000 tonnes
Meat ¹	24.4	31.7	31.9	32.3
Milk	264.5	295.3	346.3	376.2

¹ slaughterings + export of live animals - import of live animals

Forestry

	2000	2010	2015	2016
	in 1000 m ³			
Production of raw wood	266	495	358	306
Import of raw wood	753	906	328	343
Export of raw wood	219	265	237	245

Wine-growing

	1999/2000	2009/10	2015/16	2016/17
	in 1000 hectolitres			
1. Wine production	184.3	134.8	110.7	82.9
of which: Rivaner	73.7	47.2	33.2	23.1
Auxerrois	19.9	19.5	16.3	13.1
Pinot gris	17.9	13.9	14.7	10.4
Pinot blanc	19.3	14.0	15.4	10.3
Riesling	19.0	14.5	10.7	9.8
Elbling	26.9	16.1	9.2	8.2
Pinot noir	5.6	6.6	8.2	5.4
Chardonnay	0.7	1.5	1.5	1.3
Gewürztraminer	1.0	1.1	1.1	1.0
Others	0.3	0.4	0.4	0.3
2. Import	255.6	222.0	218.2	...
3. Stock variation	42.0	5.0	1.9	...
4. Total offer (4) = (1) + (2) - (3)	397.9	351.8	327.0	...
5. Total Export	101.4	79.9	66.7	...
of which: Export	57.7	52.3	44.3	...
Re-export	43.7	27.6	22.4	...
6. Domestic sales (6) = (4) - (5)	296.5	271.9	260.3	...

Handicraft

	2000	2010	2015	2016
Number of enterprises	4153	5499	6890	7034
of which: Construction	1944	2818	3519	3568
Employed persons	51165	72988	85973	90479
of which: Construction	33494	49959	57517	60111
Number of employees	46756	68261	80013	84383
of which: Construction	31708	47899	54909	57460

Industry

Activity indices

	2013	2014	2015	2016
Production			Index 100 in 2010	
Total industry	95.4	97.6	98.9	97.7
Intermediate products	93.0	97.3	95.5	100.4
Capital goods	104.1	107.7	110.3	101.8
Consumer goods	97.8	96.3	101.7	96.2
Energy	80.6	82.4	81.9	76.9
Iron and steel	88.2	99.1	84.0	96.8
Other industries	95.9	97.5	100.1	97.7
Turnover				
Total industry	106.2	99.2	89.9	86.5
Intermediate products	102.5	93.1	76.2	73.5
Capital goods	113.6	114.9	120.3	121.4
Consumer goods	114.3	110.2	119.1	108.4
Iron and steel	79.9	81.8	74.9	71.1
Other industries	110.8	102.3	92.6	89.3

Producer price indices

	2013	2014	2015	2016
			Index 100 in 2010	
Total industrial products	106.18	103.04	101.91	100.59
Intermediate products	104.87	101.73	100.69	98.10
Capital goods	106.07	106.12	104.75	105.45
Consumer goods	104.77	105.27	105.86	116.45
Energy goods	112.17	103.05	100.27	90.97
Domestic market prices	109.53	104.30	103.76	97.54
EU market prices	105.52	103.22	102.02	103.64
Export prices	102.57	100.08	98.08	94.77

Steel industry

	2000	2010	2015	2016
Production			in 1000 tonnes	
Steel	2571	2548	2127	2175
Rolled steel products	3360	2506	2395	2453
Finished rolled products	2918	2276	2034	2056
Shapes (joists, etc.)	1058	1272	1454	1437
Merchants products	750	427	77	75
Sheets and coils	1033	577	503	544
Semi-finished products	442	230	361	397

Construction

Building permissions

	2000	2010	2015	2016
Number of buildings	1642	1901	1850	2075
Number of dwellings	3412	3892	4558	4846
Interior space (1000 m ³)	5450	5496	7895	6293

Finished buildings

	2000	2010	2013	2014
Buildings	1066	1018	1316	1599
Dwellings	1671	2824	2642	3357
of which: One-dwelling residential buildings	896	747	1078	1277
Two and more dwelling residential buildings	642	1331	1238	1744
Total floor area (in m ²)	594297	703549	647683	839853

Activity indices

	2013	2014	2015	2016
	Index 100 in 2010			
Production	93.5	96.8	95.5	99.2
Building and civil engineering	93.5	99.6	95.6	99.7
Specialized construction activities	93.4	94.5	94.7	97.0

Building price index

Index 100 in 1970 (annual average)

	2009	2010	2011	2012	2013	2014	2015	2016
	677.10	682.08	702.03	720.99	734.91	747.63	755.30	762.90

Average apartment prices

	2010	2014	2015	2016
Average price (in EUR)	322336	377368	395101	413765
Average floor area (in m ²)	82	81	82	80
Average price by floor area (in EUR/m ²)	3973	4696	4899	5262

Tourism

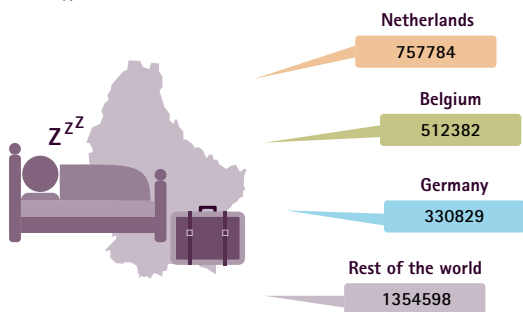
General survey

(Situation on December 31st)

	2000	2010	2015	2016
Number of establishments				
Hotels and similar establishments	343	262	234	226
Camping sites	116	99	88	88
Capacities				
Hotels and similar establishments (rooms)	8103	8415	7682	7525
Camping sites (persons)	51464	48777	44376	44376
Arrivals of tourists x 1000				
All types of accommodation	895	855	1198	1162
Hotels and similar establishments	607	686	941	920
Camping sites	192	125	156	144
Other types of accommodation	96	44	102	98
Overnight stays of tourists x 1000				
All types of accommodation	2677	1860	2984	2956
Hotels and similar establishments	1263	1252	1741	1754
Camping sites	1042	487	999	970
Other types of accommodation	372	120	244	233

Overnight stays by country of residence of the guests in 2016

(All types of accommodation)



Transport

Roads

(Situation on January 1st)

	2000	2010	2016	2017
				in km
National network	2863	2899	2908	2912
of which: Motorways	115	152	161	165

Road goods transport

	2000	2010	2015	2016
				in millions of tkm ¹
Total	7476	8655	7095	6639
Inland traffic	448	572	698	658
International traffic	7028	8083	6397	5981

¹ tonne-kilometre

Motor vehicles

(Situation on January 1st)

Type of vehicles	2000	2010	2016	2017
Total	318914	411443	453837	466472
of which: Motorcycles	10810	15551	18569	19485
Passenger cars	263475	331503	381103	390935
Motor coaches	984	1623	1857	1904
Lorries	19226	29191	35072	36732
Road tractors and special vehicles	5258	8006	7546	7648

	2000	2010	2016	2017
Passenger cars by label				in %
Volkswagen	13.8	13.9	14.5	14.3
BMW	5.4	8.6	10.2	10.4
Audi	5.7	7.6	8.8	8.7
Mercedes	5.2	6.9	7.3	7.6
Renault	8.7	7.5	6.4	6.3
Peugeot	6.2	6.9	5.8	5.5
Ford (D)	9.4	5.8	5.1	5.0
Citroën	4.2	5.7	4.9	4.6
Opel	7.4	4.5	3.9	3.9
Hyundai	0.7	3.9	3.5	3.4
Others	33.3	28.9	29.6	30.3

New registrations of new motor vehicles (four wheels and more)

	2000	2010	2015	2016
Total	47064	54951	52533	57317
of which: Passenger and estate cars	41896	49726	46473	50561

Railways

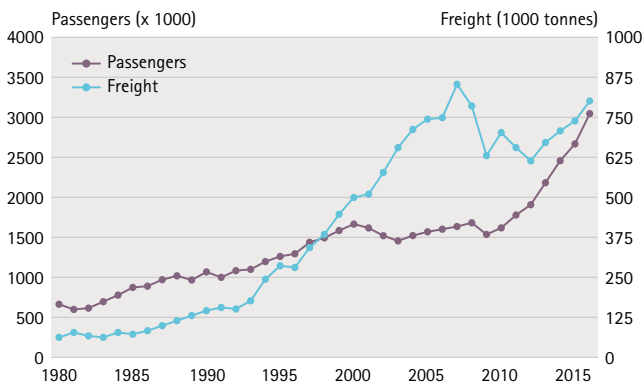
	2000	2010	2015	2016
Utilised railways (in km)	274	275	275	275
Passenger-km (in millions)	332	347	418	417
Tonnes-kilometres (in millions) ¹	683	323	231	223

Port of Merttert

	2000	2010	2015	2016
	in 1000 tonnes			
Loading	491	147	224	257
of which: Steel products	160	141	141	157
Unloading	1109	685	546	570
of which: Fuel	420	446	305	345
Construction materials	87	21	55	33
Agricultural products	81	55	55	55
Steel products	422	133	39	70

Luxembourg airport

	2000	2010	2015	2016
Passengers (in thousands)	1669	1630	2687	3023
of which: Transit	7	-	-	1
Freight (in tonnes)	500811	705370	738136	802426
of which: Transit	3	732	1141	1531



Financial services

Banking

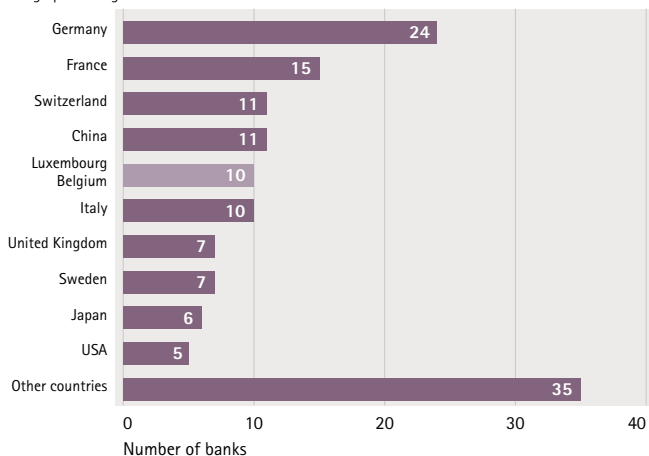
(Situation on December 31st)

	2000	2010	2015	2016
Number of banks	202	145	143	141
Employees	23035	26255	25897	26062
of which: Women	10613	12040	11879	11925
	in billions of EUR			
Total balance sheet	647.7	769.3	746.8	763.7
Total credits	446.4	555.2	565.2	591.0
Bank credits	317.3	364.0	367.8	376.5
Client credits	129.1	191.2	197.4	214.5
Total deposits	521.4	614.0	606.1	612.9
Bank deposits	297.7	348.2	276.6	269.3
Client deposits	223.7	265.8	329.4	343.6
Net profit (after taxes)	2.4	3.9	4.1	...

Banks by geographical origin

May 2017

Geographical origin



Undertaking for collective investment (UCI)

(Situation on December 31st)

	2000	2010	2015	2016
Unit investment trust funds				
Number	914	1944	1684	1588
Net assets (in billions of EUR)	462.8	652.2	829.9	837.1
SICAV investment fund				
Number	840	1701	2151	2226
Net assets (in billions of EUR)	404.0	1540.1	2655.8	2841.0
Other UCI				
Number	31	22	43	47
Net assets (in billions of EUR)	7.8	6.7	20.5	23.0
SICAR investment companies				
Number	.	.	.	283
Net assets (in billions of EUR)	.	.	.	40.3

Insurance

(Situation on December 31st)

	2000	2010	2015	2016 ¹
			in millions of EUR	
Total amount of gross premiums written	6865.4	24691.0	24764.9	25047.8
of which: Life	6028.6	22384.9	21326.7	21471.8
Non-life	836.8	2306.1	3438.2	3576.1
of which Fire, natural elements	64.7	274.0	371.3	362.5
Accidents - Civil liability	189.1	462.8	560.8	582.9
Legal protection insurance	9.3	37.1	32.8	33.2
			Number	
Insurance companies	93	95	94	90
Reinsurance companies	264	244	219	209

¹ provisional figures

Interest rates

	2000	2010	2015	2016
				in %
Savings deposit rate ^{1,2}	3.35	0.88	0.54	0.51
Mortgage rate ¹	5.98	2.31	2.03	1.93
Legal interest rate	5.00	3.50	3.00	3.00

¹ situation in December

² since 2003, deposits with agreed maturity up to 2 years

Luxembourg Stock Exchange

	2000	2010	2015	2016
Quotation lines	19690	44916	37930	36505
Turnover (in millions of EUR)	2820	219	229	185
Price by ingot of 1 kg of fine gold (in EUR) ¹	9510	33920	31380	35445

¹ daily average

Telecommunication

Electronic communications

(Situation on December 31st)	2010	2014	2015	2016
				x 1000
Fixed telephone lines	272.0	271.0	276.9	276.4
Mobile phone subscriptions	727.0	883.0	905.9	896.6
Broad band Internet subscriptions	155.0	186.7	195.3	203.1
Television line subscriptions ¹	...	137.6	144.2	143.9

¹ satellite TV not included

Information society

Access of households to information and communication technology systems (ICT)

	2010	2014	2015	2016
				in % of households
Access to Internet	90	96	97	97
				in % of households having Internet access
E-commerce	51	65	65	70
E-banking	63	70	67	73
Reading newspapers/news online	66	86	85	89

Equipment of enterprises

	2010	2012	2014	2016
				in %
Enterprises using IT	98	99	100	100
Enterprises with Internet access	96	98	100	100
Enterprises with Internet access and website	70	77	77	81
Internet connection used by enterprises				
Broadband	90	97	96	96
ISDN or analog modem	29	30
DSL	86	89
Other fixed connections	18	34
Wireless connection	48	53	71	...

National accounts

Main aggregates

	2000	2010	2015	2016
Production approach				
	in billions of EUR			
1. Output (at basic prices)	55.1	115.5	185.9	191.9
2. Intermediate consumption	34.5	79.4	138.5	142.7
3. Gross value added (1-2)	20.6	36.1	47.4	49.2
4. Taxes on products	2.6	4.3	5.2	5.3
5. Subsidies on products	0.1	0.2	0.3	0.3
Expenditure approach				
6. Final consumption expenditure (7+8+9)	12.2	19.8	24.3	24.7
7. of households	8.5	12.4	14.9	15.1
8. of NPISH ¹	0.3	0.6	0.8	0.8
9. of general government	3.4	6.8	8.6	8.8
10. Gross fixed capital formation	5.1	7.2	9.9	9.8
11. Exports (12+13)	34.3	70.1	118.9	123.5
12. of goods	9.2	16.0	19.7	20.1
13. of services	25.1	54.1	99.2	103.4
14. Imports (15+16)	28.5	56.9	100.7	103.8
15. of goods	11.7	16.6	18.4	18.0
16. of services	16.8	40.3	82.3	85.8
Income approach				
17. Compensation of employees	10.7	19.9	24.8	25.7
18. Operating surplus	9.6	15.9	22.0	22.8
19. Taxes on production and imports	2.8	4.4	5.5	5.7
20. GDP ² (3+4-5=6+10+11-14=17+18+19)	23.1	40.2	52.3	54.2
21. Balance of compensation of employees with ROW ³	-2.6	-6.7	-8.4	...
22. Balance of taxes on production and imports with ROW ³	0.0	0.0	0.0	...
23. Balance of property income with ROW ³	-0.8	-4.0	-9.4	...
24. Gross national income (20+21+22+23)	19.7	29.4	34.5	...
25. Consumption of fixed capital	2.8	4.9	6.3	...
26. Net national income (24-25)	16.9	24.6	28.2	...
27. GDP ² at constant prices	30.8	40.2	46.9	48.9
28. GDP ² growth rate (in %)	8.2	4.9	4.0	4.2
29. GDP ² per capita (in thousands of EUR)	52.8	79.2	91.9	92.9
30. Compensation of employees per capita (in thousands of EUR)	43.5	58.9	65.2	65.5

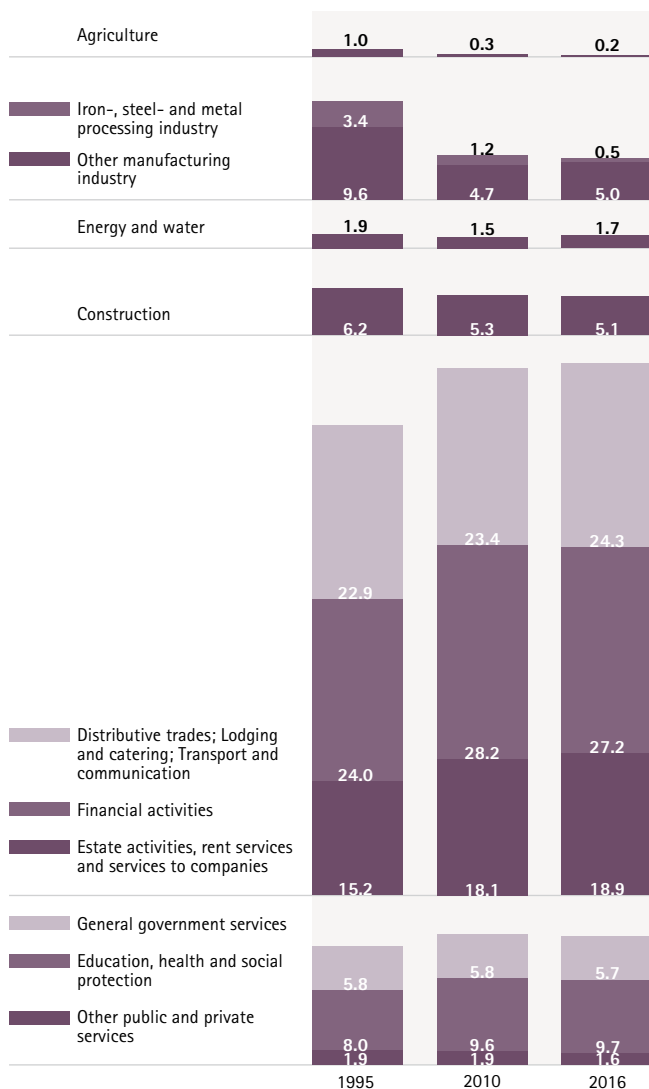
European System of integrated economic Accounts (ESA 2010)

¹ NPISH: non-profit institutions serving households

² GDP: Gross Domestic Product

³ ROW: rest of the world

Structure of the gross value added at basic prices (in %)



Public finances

General government expenditure and revenue

	2000	2010	2015	2016
General government consolidated				
			in millions of EUR	
Expenditure	8726.9	17728.8	21594.8	22302.3
Gross capital formation	892.5	1892.1	1950.8	2051.0
Social benefits	3906.7	8345.3	10293.0	10562.8
Revenue	10085.9	17464.3	22335.4	23147.0
Taxes on production and imports	3055.8	4914.7	6179.3	6243.7
Current taxes on income, wealth, etc.	3283.7	5731.0	7456.2	8021.5
Social contributions	2527.9	4886.0	6254.0	6455.1
Net lending (+) / Net borrowing (-)	1359.0	-264.5	740.5	844.8

Central government

Expenditure	6358.3	12939.2	15690.3	16198.6
Revenue	7027.1	11995.6	15453.9	15983.8
Net lending (+) / Net borrowing (-)	668.8	-943.6	-236.3	-214.9

Local governments

Expenditure	1144.8	2097.8	2357.6	2652.0
Revenue	1255.4	2161.7	2573.2	2822.3
Net lending (+) / Net borrowing (-)	110.6	63.9	215.6	170.3

Social security funds

Expenditure	3522.3	7276.5	9098.8	9234.7
Revenue	4101.9	7891.7	9860.1	10124.0
Net lending (+) / Net borrowing (-)	579.6	615.2	761.3	889.3

Public debt

	2000	2010	2015	2016
			in millions of EUR	
Central government	1043.2	6990.3	10227.0	9826.3
of which: Foreign debt	129.5	2763.0	4125.8	3879.2
Local governments	454.3	960.1	1085.8	1026.5
Social security funds	0.3	0.0	1.6	0.1
Total	1497.7	7950.4	11314.4	10852.9

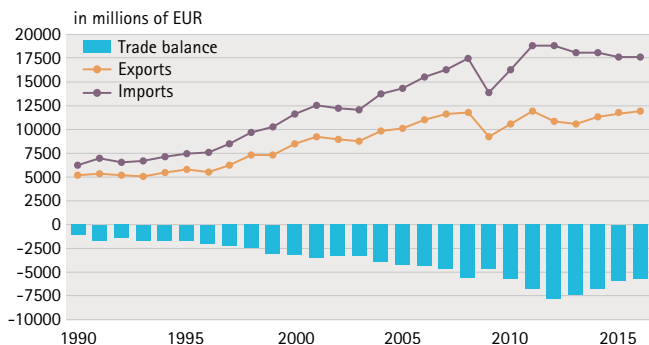
External trade

Exports and imports by product type

	Exports		Imports	
	2015	2016	2015	2016
in millions of EUR				
Group of divisions of the SITC ¹				
Total	11730.2	11903.1	17690.9	17636.1
1. Food and live animals	983.7	837.9	1642.4	1578.2
2. Beverages and tobacco	228.0	222.1	516.2	559.6
3. Crude materials, oils, fats and waxes	280.2	286.5	1186.4	1133.3
4. Mineral fuels, lubricants	54.7	7.3	1670.3	1320.2
5. Chemicals and related products	1312.2	1339.4	2069.0	2050.9
6. Manufactured goods in metals	2832.0	2701.5	1470.6	1432.1
7. Other manufactured goods classified chiefly by material	1839.4	1909.1	1327.1	1355.2
8. Machinery	2058.0	2253.3	2599.3	2978.0
9. Transport equipment	1061.6	1194.8	3339.8	3308.4
10. Other manufactured goods	1080.4	1151.1	1869.8	1920.2

¹ Standard international trade classification

Trade balance



External trade by countries

	Exports		Imports	
	2015	2016	2015	2016
in millions of EUR				
Total	11730.2	11903.1	17690.9	17636.1
Europe	9882.6	10299.3	15542.9	15589.4
European Union (28 countries)	9370.8	9647.8	15367.2	15399.2
of which: Germany	3215.8	3286.5	4846.4	4855.7
Austria	213.6	223.1	115.1	128.7
Belgium	1472.3	1408.2	5863.3	5802.9
Denmark	103.2	94.3	50.4	45.6
Spain	269.0	279.1	140.9	160.0
Finland	46.9	43.9	24.2	20.7
France	1617.4	1737.1	2054.5	2061.8
Greece	33.0	27.8	12.9	15.4
Hungary	47.4	56.8	67.0	65.7
Ireland	35.4	38.0	85.7	124.7
Italy	455.7	474.6	423.6	411.5
Netherlands	608.8	675.8	901.6	862.5
Poland	250.9	264.9	164.5	180.1
Portugal	42.3	48.6	56.1	52.6
Czech Republic	108.9	143.8	122.4	165.5
United Kingdom	481.0	464.3	276.1	285.9
Slovakia	49.3	45.3	20.4	24.0
Slovenia	31.1	36.2	14.7	14.4
Sweden	168.8	166.7	75.1	70.8
Other countries of Europe	511.8	651.5	175.7	190.2
of which: Switzerland	162.8	244.7	122.2	133.3
Russia	104.2	126.5	7.0	5.0
Turkey	115.6	127.2	23.1	21.0
Outside Europe	1847.5	1603.7	2148.0	2046.8
America	691.3	619.8	1609.6	1313.5
of which: USA	450.8	438.8	1486.9	1047.1
Canada	99.3	83.4	104.7	201.9
Brazil	59.5	23.8	4.2	51.8
Asia	915.3	785.4	493.7	679.0
of which: China	231.7	223.2	120.8	125.1
Japan	65.5	69.0	196.1	394.7
Hong Kong	54.2	51.0	7.2	11.6
Taiwan	54.3	24.8	23.7	26.4
South Korea	45.0	56.4	11.2	11.7
Indonesia	9.5	16.6	0.5	0.8
India	41.1	42.9	8.7	8.5
Africa	214.9	169.4	33.0	41.2
Oceania	23.5	25.0	1.8	4.4
Others	2.6	4.1	10.0	8.6

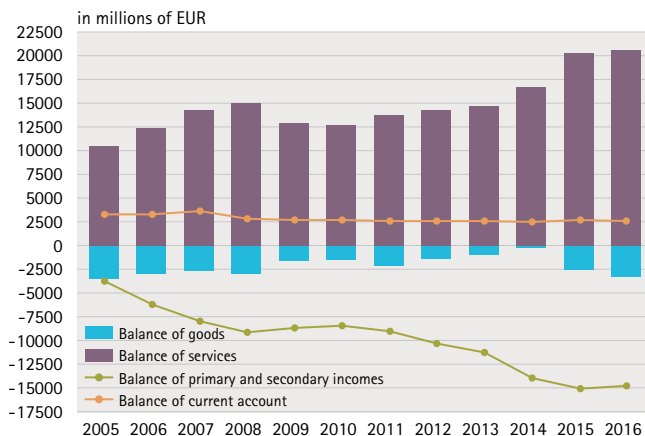
Balance of current account

Current account

	2010	2014 ¹	2015 ¹	2016 ¹
in millions of EUR				
1. Goods (balance)	-1558	-236	-2614	-3261
Exports	14883	18476	15852	14792
Imports	16441	18712	18466	18053
2. Services (balance)	12711	16625	20357	20619
Exports	47122	75888	86207	85485
Imports	34411	59263	65850	64867
3. Primary income (balance)	-8599	-14277	-15943	-15423
3.a. of which: Compensation of employees (balance)				
Credit	1225	1377	1404	1433
Debit	7932	9496	10113	10366
3.b. of which: Investment income (balance)				
Credit	109874	180796	198776	190637
Debit	111817	186970	206482	197150
4. Secondary income (balance)	128	399	880	620
Credit	6597	7944	8511	8831
Debit	6469	7545	7631	8211
Current account balance (1+ 2 + 3 + 4)	2682	2511	2681	2555

¹ provisional figures

Balance of current account



International trade in services by partner

	Exports		Imports	
	2015	2016	2015	2016
in millions of EUR				
Total (Rest of the World)	86207	85485	65850	64867
Europe	69358	69557	48768	49031
European Union (EU28)	61022	61500	41410	42187
of which: United Kingdom	13755	13148	11766	11810
Germany	13922	14874	8882	9669
France	8513	8652	4962	5006
Italy	6474	6773	2573	2614
Belgium	5377	5327	2493	2412
Netherlands	2566	2631	2254	2072
Ireland	1002	925	3272	3104
Spain	2200	2273	1237	1358
Sweden	1932	1830	1242	1507
Austria	662	620	470	459
Portugal	639	612	356	374
Denmark	471	449	461	312
EU institutions	680	730	12	14
Finland	524	475	171	175
Poland	418	373	239	261
Hungary	283	308	244	224
Czech Republic	327	289	172	166
Greece	188	193	153	155
Romania	235	202	127	143
Cyprus	177	153	42	57
Other countries of Europe	8337	8056	7358	6844
of which: Switzerland	5914	5748	6275	5741
Norway	301	294	343	317
Guernsey	304	369	82	96
Jersey	321	273	144	163
America	7974	7587	11688	10264
of which: United States	4964	4900	9340	8091
Bermuda	274	265	1770	1663
Canada	568	465	208	167
Asia	7103	6757	4994	5189
of which: Singapore	737	830	2704	3146
Hong Kong	1229	1073	1180	986
China	1314	1469	195	185
Japan	824	806	264	274
South Korea	293	256	54	49
Africa	1214	1035	272	235
of which: South Africa	276	265	41	50
Oceania	531	528	72	93
of which: Australia	296	313	58	68
International Organisations	27	22	56	55

Prices

Consumer prices by June 2017 (in EUR)

Wheat flour (1 kg)	0.89	Coffee (250 g)	3.70
Bread (500 g sliced)	2.14	Mineral water without fizz (1.5 l)	0.54
Croissant (1 piece)	1.13	Medical consultation, general practitioner	43.70
Porc chop (1 kg)	10.46	Medical consultation, specialist	
Fresh milk (1 l)	1.36	(internal medicine)	41.20
Eggs (a dozen)	3.41	Petrol 95 octane (1 l)	1.14
Butter (250 g)	2.17	Fuel oil (1 l)	0.50
Apples (1 kg)	2.51	Diesel (1 l)	0.96
Fresh bananas (1 kg)	2.06	Movie ticket	8.63
Potatoes (5 kg)	7.40	Daily newspaper (1 unit)	1.60
White sugar (1 kg)	1.35	Urban bus transport (single ticket)	2.00

National consumer price index

	2014	2015	2016
	change rate in %		
General index (= Inflation rate)	0.6	0.5	0.3
Food, non alcoholic beverages	0.6	0.8	1.5
Alcoholic beverages and tobacco	2.6	2.6	1.7
Clothing and shoes	0.6	0.4	1.2
Housing, water, electricity and combustible	-1.0	-0.9	-1.6
Furniture, household outfit and repair	1.6	1.3	0.6
Health	0.3	0.0	0.1
Transport	0.0	-0.7	-0.7
Communication	-1.4	-1.0	0.3
Leisure, spectacle and culture	1.7	0.9	0.3
Education	2.3	1.3	2.2
Hotels, cafes and restaurants	2.1	3.9	1.4
Miscellaneous goods and services	1.2	0.9	1.0

Adjustment dates in the wage indexation system

Date of the adjustment	Wage index	Wage increase in %
01/01/2017	794.54	2.5
01/10/2013	775.17	2.5
01/10/2012	756.27	2.5
01/10/2011	737.83	2.5
01/07/2010	719.84	2.5
01/03/2009	702.29	2.5
01/03/2008	685.17	2.5
01/12/2006	668.46	2.5

Consumption

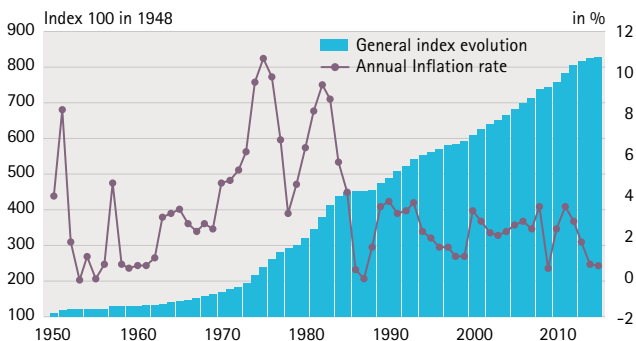
Final consumption of households on the economic territory (including VAT and self-consumption)

	2012	2013	2014	2015
				in millions of EUR
1. Food, non-alcoholic beverages	1513	1558	1619	1631
2. Alcoholic beverages and tobacco	1421	1446	1673	1373
3. Clothing and shoes	892	888	920	962
4. Housing, water, electricity, gas and other fuels	3817	3972	4101	4229
5. Furniture, household outfit and repair	993	960	960	1012
6. Health	344	364	380	400
7. Transport	2877	2880	2943	2839
8. Communication	272	266	268	274
9. Leisure, entertainment and culture	997	1023	1089	1113
10. Education	164	174	190	195
11. Hotels, cafés and restaurants	1215	1234	1257	1324
12. Miscellaneous goods and services	2026	2161	2340	2325
Total	16529	16927	17740	17677
				in %
1. Food, non-alcoholic beverages	9.15	9.21	9.13	9.23
2. Alcoholic beverages and tobacco	8.60	8.54	9.43	7.77
3. Clothing and shoes	5.39	5.25	5.19	5.44
4. Housing, water, electricity, gas and other fuels	23.09	23.46	23.12	23.93
5. Furniture, household outfit and repair	6.01	5.67	5.41	5.73
6. Health	2.08	2.15	2.14	2.26
7. Transport	17.41	17.02	16.59	16.06
8. Communication	1.64	1.57	1.51	1.55
9. Leisure, entertainment and culture	6.03	6.04	6.14	6.30
10. Education	1.00	1.03	1.07	1.10
11. Hotels, cafés and restaurants	7.35	7.29	7.09	7.49
12. Miscellaneous goods and services	12.26	12.77	13.19	13.15
Total	100.00	100.00	100.00	100.00

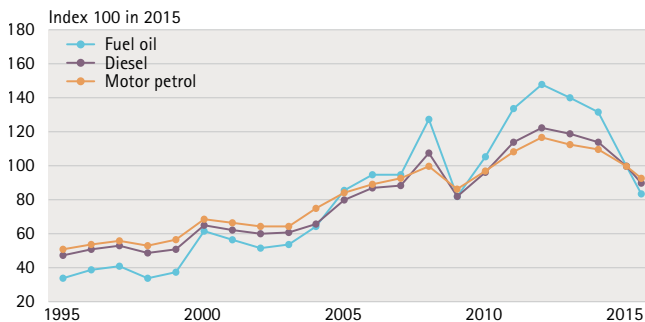
Individual consumption of residents

	2012	2013	2014	2015
	in millions of EUR			
1. Actual individual consumption on the economic territory	16529	16927	17740	17677
2. Actual individual consumption of non-residents on the economic territory	4082	4042	4423	3994
3. Actual individual consumption of residents abroad	1108	1174	1203	1223
4. Actual individual consumption of residents (4) = (1) - (2) + (3)	13555	14059	14519	14906

Consumer price index



Consumer price index for fuel (annual average)



International comparison

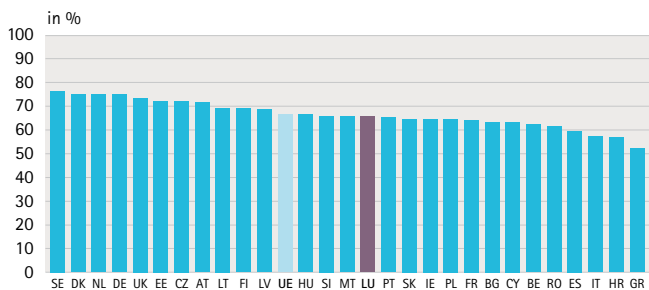
Population and employment

	Total population	Population density	Employ- ment ¹	Employ- ment rate ²	Unemploy- ment rate
	2016 x1000	2015 inhab./km ²	2016 x1000	2016 in %	2016 in %
EU (28 countries)	510284	117	218375	66.6	8.7
Belgium, BE	11311	372	4541	62.3	7.9
Bulgaria, BG	7154	66	2954	63.4	7.7
Czech Republic, CZ	10554	137	5016	72.0	4.0
Denmark, DK	5707	132	2748	74.9	6.3
Germany, DE	82176	229	40256	74.7	4.2
Estonia, EE	1316	30	612	72.1	7.0
Ireland, IE	4725	68	1953	64.8	8.1
Greece, GR	10784	82	3610	52.0	23.7
Spain, ES	46446	93	18183	59.5	19.7
France, FR	66760	105	26243	64.2	10.1
Croatia, HR	4191	74	1567	56.9	13.3
Italy, IT	60666	201	22241	57.2	11.9
Cyprus, CY	848	92	359	63.4	13.2
Latvia, LV	1969	32	862	68.7	9.9
Lithuania, LT	2889	46	1318	69.4	8.1
Luxembourg, LU	576	220	259	65.6	6.3
Hungary, HU	9830	106	4309	66.5	5.1
Malta, MT	434	1370	188	65.7	4.8
Netherlands, NL	16979	503	8223	74.8	6.1
Austria, AT	8690	105	4143	71.5	6.1
Poland, PL	37967	124	15902	64.5	6.2
Portugal, PT	10341	112	4371	65.2	11.5
Romania, RO	19760	86	8166	61.6	6.1
Slovenia, SI	2064	102	902	65.8	8.1
Slovakia, SK	5426	111	2472	64.9	9.7
Finland, FI	5487	18	2380	69.1	9.0
Sweden, SE	9851	24	4736	76.2	7.1
United Kingdom, UK	65383	269	30436	73.5	4.9
Iceland, IS	333	3	180	86.6	3.1
Norway, NO	5211	17	2545	74.3	4.8
Switzerland, CH	8327	207	4491	79.6	4.8

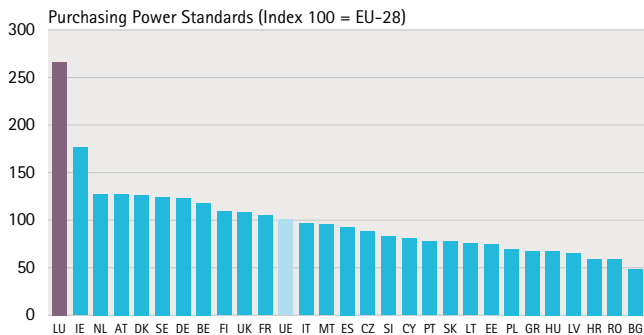
¹ European Labor force survey LFS, employment by place of residence

² males and females, 15-64 years

Employment rate in 2016



GDP per inhabitant in 2016



Business economy (except financial and insurance activities)

	Persons employed per enterprise	Personnel costs per employee	Share of employees in persons employed	Share of the gross operating surplus in turnover
	2014 number	2014 thousands EUR	2014 in %	2014 in %
Belgium	4.6	52	77	8.5
Bulgaria	5.9	6	88	8.7
Czech Republic	3.5	15	77	10.1
Denmark	7.7	49	94	11.1
Germany	11.1	38	91	9.5
Estonia	6.4	15	96	9.2
Ireland	5.3	45	89	14.4
Greece	3.2	19	65	9.9
Spain	4.5	31	81	9.6
France	4.9	48	90	6.3
Croatia	6.8	12	92	12.3
Italy	3.8	36	70	9.9
Cyprus	4.5	22	94	11.3
Latvia	6.2	9	96	9.5
Lithuania	5.2	9	92	9.4
Luxembourg	7.9	51	96	5.9
Hungary	4.8	12	87	9.8
Malta	4.8	18	83	13.9
Netherlands	5.1	38	87	9.8
Austria	8.5	44	89	9.5
Poland	5.4	12	80	11.2
Portugal	3.7	17	82	9.2
Romania	8.4	7	97	12.1
Slovenia	4.5	22	86	9.3
Slovakia	3.6	15	77	9.5
Finland	6.4	43	91	8.9
Sweden	4.5	55	85	9.0
United Kingdom	10.0	34	96	14.8
Norway	5.5	67	95	16.7
Switzerland	19.0	6.0

National accounts

	GDP at market prices	GDP per inhabitant	Real growth of GDP	Private consump. expenditure	Consump. of general government
	2016 in bil. of EUR	2016 in PPS ¹	2016 in %	2016 in % of GDP	2016 in % of GDP
EU (28 countries)	14825	100	1.9	...	20.5
Belgium	422	118	1.2	51.2	23.6
Bulgaria	47	48	3.4	60.8	15.8
Czech Republic	177	88	2.6	47.0	19.2
Denmark	277	125	1.7	47.5	25.4
Germany	3134	123	1.9	53.7	19.6
Estonia	21	74	1.6	53.3	20.6
Ireland	266	177	5.2	34.2	12.7
Greece	176	67	0.0	70.5	19.6
Spain	1114	92	3.2	57.8	18.9
France	2229	105	1.2	55.3	23.6
Croatia	46	59	3.0	57.9	19.2
Italy	1672	96	0.9	60.6	18.9
Cyprus	18	81	2.8	69.6	15.2
Latvia	25	65	2.0	62.0	17.5
Lithuania	39	75	2.3	65.1	17.7
Luxembourg	54	267	4.2	29.2	16.3
Hungary	112	67	2.0	50.4	20.2
Malta	10	95	5.0	48.3	16.9
Netherlands	703	128	2.2	44.2	24.7
Austria	349	126	1.5	52.7	20.1
Poland	424	69	2.7	58.6	17.9
Portugal	185	77	1.4	65.8	18.0
Romania	170	59	4.8	61.8	14.1
Slovenia	40	83	2.5	51.7	18.9
Slovakia	81	77	3.3	54.7	19.5
Finland	216	109	1.9	55.2	24.0
Sweden	462	124	3.2	44.6	26.1
United Kingdom	2367	108	1.8	65.1	19.0
Iceland	18	129	7.2	...	23.1
Norway	335	149	1.1	...	24.4
Switzerland	596	159	1.3	...	11.5
United States	...	144
Japan	...	105

¹ Purchasing Power Standards. Index 100 = EU-28

Prices and finances

	Harmonised inflation	Price level index	Social protection expenditures	General government consolid. debt
	2016 in %	2016 EU-28=100	2014 in % of GDP	2016 in % of GDP
EU (28 countries)	0.3	100.0	28.7	...
Belgium	1.8	109.1	30.3	105.9
Bulgaria	-1.3	47.9	18.5	29.5
Czech Republic	0.6	65.5	19.7	37.2
Denmark	0.0	138.7	32.9	37.8
Germany	0.4	103.6	29.1	68.3
Estonia	0.8	76.0	15.1	9.5
Ireland	-0.2	124.6	20.6	75.4
Greece	0.0	86.2	26.0	179.0
Spain	-0.3	91.5	25.4	99.4
France	0.3	108.1	34.3	96.0
Croatia	-0.6	65.8	21.6	84.2
Italy	-0.1	102.3	29.9	132.6
Cyprus	-1.2	87.6	23.0	107.8
Latvia	0.1	70.8	14.5	40.1
Lithuania	0.7	63.4	15.2	40.2
Luxembourg	0.0	123.7	22.7	20.0
Hungary	0.4	59.6	19.9	74.1
Malta	0.9	81.8	18.2	58.3
Netherlands	0.1	110.6	30.9	62.3
Austria	1.0	106.6	30.0	84.6
Poland	-0.2	52.9	19.1	54.4
Portugal	0.6	84.3	26.9	130.4
Romania	-1.1	51.6	14.8	37.6
Slovenia	-0.2	81.6	24.1	79.7
Slovakia	-0.5	68.0	18.5	51.9
Finland	0.4	121.4	31.9	63.6
Sweden	1.1	124.1	29.5	41.6
United Kingdom	0.7	120.6	27.4	89.3
Iceland	0.8	147.0	23.9	...
Norway	3.9	139.6	26.0	...
Switzerland	-0.5	161.5	27.0	...
United States	0.5	112.3
Japan	...	112.9

Most publications are no longer available in paper version.

If you are not able to download them from the Internet, please send an e-mail to info@statec.etat.lu and we will send you the desired file.

We print and send publications on request and against payment. You can also pick them up in our offices which are open from 8:30 am to 11:30 am and from 1:30 pm to 4:30 pm.

The indicated prices are net prices, shipping fees are not included.

However, a 30% discount may be granted:

- to students
- teachers in Luxembourg
- schools and libraries
- to resellers
- associations and professional groups in Luxembourg
- companies participating in STATEC periodic surveys

All our publications are available on the website www.statistics.lu under "Publications" which allows you to place your order online.

Note de conjoncture

Publication which analyses the short-term situation and prospects of the Luxembourg economy and the international environment in the short term.



Format: 21 x 29.7 cm
ISSN 1019-6463
Price per issue : 10.00 Euros

Released twice a year

Conjoncture flash

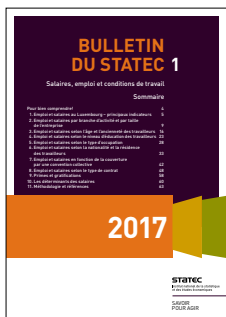
Monthly publication on the state of the Luxembourg economy.
Graphs and summary tables with comments on the main economic indicators.



Format: 21 x 29.7 cm, 4 pages
Released monthly

Online version only

This periodical contains survey results and statistics commentaries on specific topics.



Format: 21 x 29.7 cm
ISSN 0076- 1583
Price per issue: 3.70 Euros

N° 2/2017
Indice socio-économique par commune
40 pages

N° 1/2017
Salaires, emploi et conditions de travail
68 pages

N° 2/2016
La journée d'un résident
52 pages

N° 1/2016
Enquête de confiance dans les statistiques officielles 2015
36 pages

Regards...

The aim of this four-page periodical is to publish a preview of the main analysed and commented results of the STATEC surveys. The purpose of this publication is to enhance the efforts of companies and households involved in surveys by giving them easy access to information from these surveys.



Format: 21 x 29.7 cm
ISSN 2304-7127

Online version only

Cahiers économiques

This series contains detailed studies on economic or general interest topics.



Format: 21 x 29.7 cm
Price per issue: 8.60 Euros

N° 122
Un budget de référence pour le Luxembourg
Édition décembre 2016, 200 pages
ISBN 978-2-87988-133-1

N° 121
Rapport travail et cohésion sociale 2016
Édition octobre 2016, 184 pages
ISBN 978-2-87988-131-7

Répertoire des entreprises

List of Luxembourgish companies (as of January 1st).
Broken down by economic activity, the Directory provides information on the postal address.



Format: 21 x 29.7 cm
ISBN 978-2-87988-125-6

Also available on request in Excel format
Price per issue: 14.00 Euros

Online version only

This series contains short studies (working papers) on all disciplines of economic science. They may be multi-theme or devoted to a single subject. Authors and contributors are experts of STATEC but also partner organisations (Public administrations, Ministries, Universities, Public Research Centers). The volume and frequency of publication are variable.



Format: 21 x 29.7 cm
ISSN 2354-4988

Online version only

Cross-border collaboration

Saar-Lor-Lux-Rhineland-Palatinate-Wallonia

Statistiques en bref 2016

Statistische Kurzinformationen

Short description and basic statistics of the economic and social development structure of the five partners of the Greater Region.



Bilingual edition, December 2016

Format: 10.5 x 21 cm, 44 pages

Free distribution

Conjoncture dans la Grande Région

Konjunktur in der Großregion

How is the labor market evolving in the Greater Region? How does industry develop and what level of inflation does it have? These issues are covered in this new bilingual publication. The Working Group of the statistical offices of the Greater Region publishes it four times a year.

This publication describes recent economic development in the cross-border region, using a variety of short-term economic indicators, with 65400 km² and 11.5 million inhabitants. It is an important economic area in the heart of Europe.

Grande Région: Dernières nouvelles

Großregion : Statistik aktuell

It is a one page bilingual publication edited by the statistical offices of the Greater Region. At irregular intervals, it highlights a theme which concerns the five territories (Saarland, Lorraine, Luxembourg, Rhineland Palatinate and Wallonia) of the Greater Region.

"Greater Region" publications are presented and downloadable on the website www.grande-region.lu / www.grossregion.lu

Useful addresses and phone numbers

Please also see the list of addresses and links on www.statistics.lu under "Links".

Official statistical services

Office statistique des Nations unies

2 United Nations Plaza
USA-New York, NY 10017
Tel. (+ 1) 212-963-2563
Email: statistics@un.org
<http://unstats.un.org>

Eurostat

Office statistique de l'Union européenne
Bâtiment Joseph Bech
5, rue Alphonse Weicker
L-2721 Luxembourg
Tel. (+ 352) 43 01 - 1
<http://ec.europa.eu/eurostat>

Specialised statistical services

Administration de la nature et des forêts

81, avenue de la Gare
L-9233 Diekirch
Tel. (+ 352) 40 22 01 - 511
Email: thierry.palgen@anf.etat.lu
www.emwelt.lu

Administration de l'environnement

1, avenue du Rock'n'Roll
L-4361 Esch-sur-Alzette / Belval
Tel. (+ 352) 40 56 56 - 1
www.emwelt.lu

Administration des ponts et chaussées

38, boulevard de la Foire
L-1528 Luxembourg
Tel. (+ 352) 2846 - 1100
Email: info@pch.public.lu
www.pch.public.lu

Institut Luxembourgeois de Régulation

17, rue du Fossé
L-1536 Luxembourg
Tel. (+ 352) 28 228 228
<https://web.ilr.lu/>

Ministère du Développement durable et des Infrastructures - Département de l'aménagement du territoire

4, place de l'Europe
L-1499 Luxembourg
Tel. (+ 352) 247 - 86900
Email: info@dat.public.lu
www.dat.public.lu

Administration de la gestion de l'eau

1, avenue du Rock'n'Roll
L-4361 Esch-sur-Alzette / Belval
Tel. (+ 352) 24556 - 1
www.eau.public.lu

Inspection générale de la sécurité sociale (IGSS)

26, rue Sainte Zithe
L-2763 Luxembourg
Tel. (+ 352) 247 - 86360
Email: igss@igss.etat.lu
www.isog.public.lu

Banque centrale du Luxembourg

2, boulevard Royal
L-2983 Luxembourg
Tel. (+ 352) 4774 - 1
Email: info@bcl.lu
www.bcl.lu

Ministère de l'Éducation nationale, de l'Enfance et de la Jeunesse Service des statistiques et analyses

29, rue Aldringen
L-1118 Luxembourg
Tel. (+ 352) 247 - 85960
Email: statistiques@men.lu
www.men.lu

**Ministère de l'Agriculture
Service d'économie rurale**
115, rue de Hollerich
L-1741 Luxembourg
Tel. (+ 352) 247 - 82554
Email: info@ser.public.lu
www.ser.public.lu

**Agence pour le développement
de l'emploi (ADEM)**
10, rue Bender
L-1229 Luxembourg
Tel. (+ 352) 247 - 88888
Email: info@adem.etat.lu
www.adem.public.lu

**Ministère de la Santé
Direction de la Santé**
Allée Marconi / Villa Louvigny
L-2120 Luxembourg
Tel. (+ 352) 247 - 85500
Email: info@sante.public.lu
www.sante.public.lu

**Ministère de l'Enseignement
supérieur et de la Recherche**
18-20, montée de la Pétrusse
L-2327 Luxembourg
Tel. (+ 352) 247 - 85186
Email: elisa.mazzucato@mesr.etat.lu
www.mesr.public.lu

Other useful addresses

Service information et presse (SIP)
33, boulevard Roosevelt
L-2450 Luxembourg
Tel. (+ 352) 247 - 82181
Email: info@sip.etat.lu
www.sip.public.lu

**Chambre de commerce
du Grand-Duché de Luxembourg**
7, rue Alcide de Gasperi
L-2981 Luxembourg
Tel. (+ 352) 42 39 39 - 1
Email: chamcom@cc.lu
www.cc.lu

**Chambre des métiers du Grand-Duché
de Luxembourg**
2, circuit de la Foire Internationale
L-1347 Luxembourg
Tel. (+ 352) 42 67 67 - 1
Email: contact@cdm.lu
www.cdm.lu

**Luxembourg Institute of
Socio-Economic Research (LISER)**
11, Porte des Sciences
L-4366 Esch-sur-Alzette / Belval
Tel. (+ 352) 58 58 55 - 1
Email: communication@liser.lu
www.liser.lu

**Fédération des industriels
luxembourgeois (FEDIL)**
7, rue Alcide de Gasperi
L-2981 Luxembourg
Tel. (+ 352) 43 53 66 - 1
Email: fedil@fedil.lu
www.fedil.lu

STATEC
Institut national de la statistique
et des études économiques

Centre Administratif Pierre Werner
13, rue Erasme
B.P. 304
L-2013 Luxembourg

Fax

(+ 352) 46 42 89

Email

info@statec.etat.lu

Internet

www.statec.lu

Telephone

Statistical information

(+ 352) 247-84219

Secretary's office

(+ 352) 247-84272

Sale of publications

(+ 352) 247-84377

Documentation centre

(+ 352) 247-88495

September 2017

ISSN 1019-6448x

Reproduction only authorized if the source is mentioned.

Concept: Interpub', Luxembourg

Printing: Imprimerie exe s.a., Troisvierges